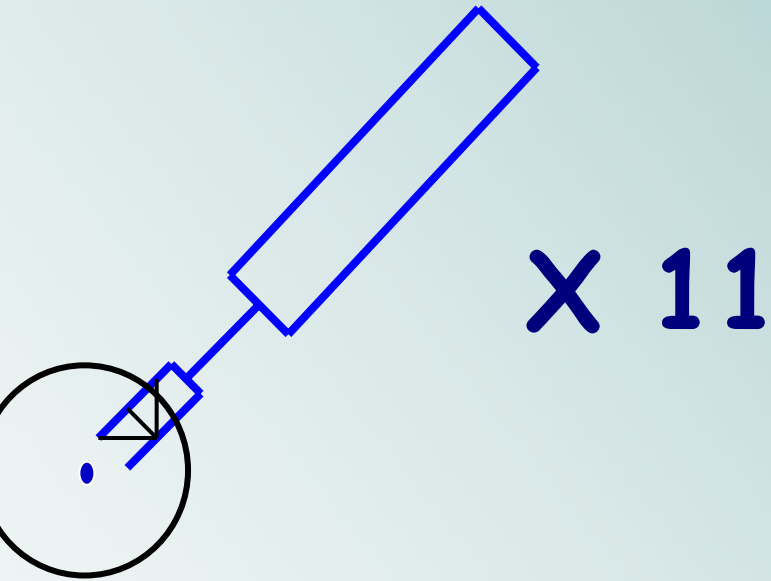

V. Gharibyan

- **Types and Locations (status)**
- **How WS work (detectors)**
- **1 detector for all? (photon dump)**

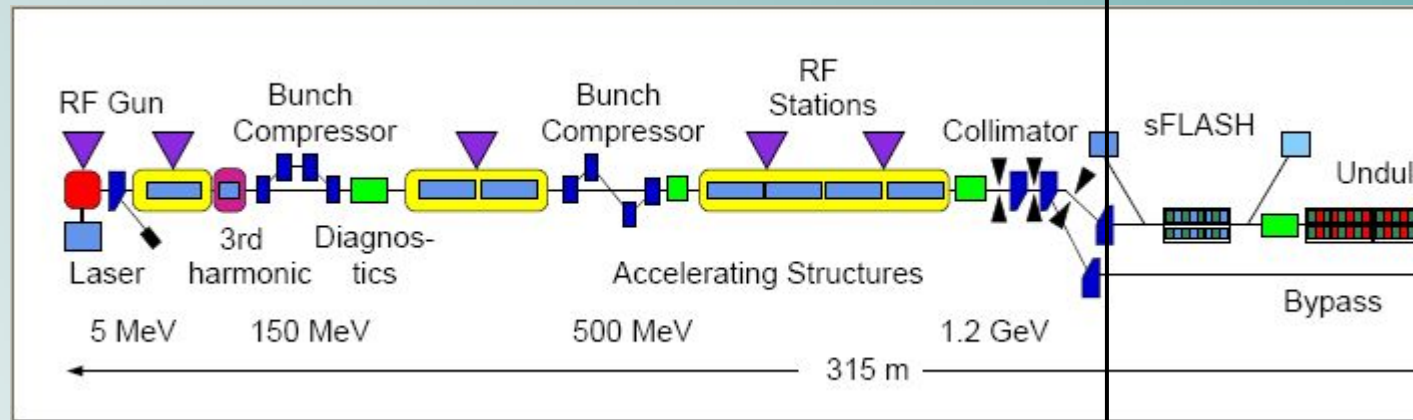


CERN (MDI) type



X 6

X 4



X 7

X

the scanners/detectors are functioning (up'n'running)

ent problems with a malfunctioning
E motor controller (BC2 scanners affected).
nd piece of metal (D9 connector) inside the
E module - solved/replaced.

could not reach a detector (6DBC2), needs
el access. Temporary solution to use 8DBC2
with the 6DBC2 scanner.

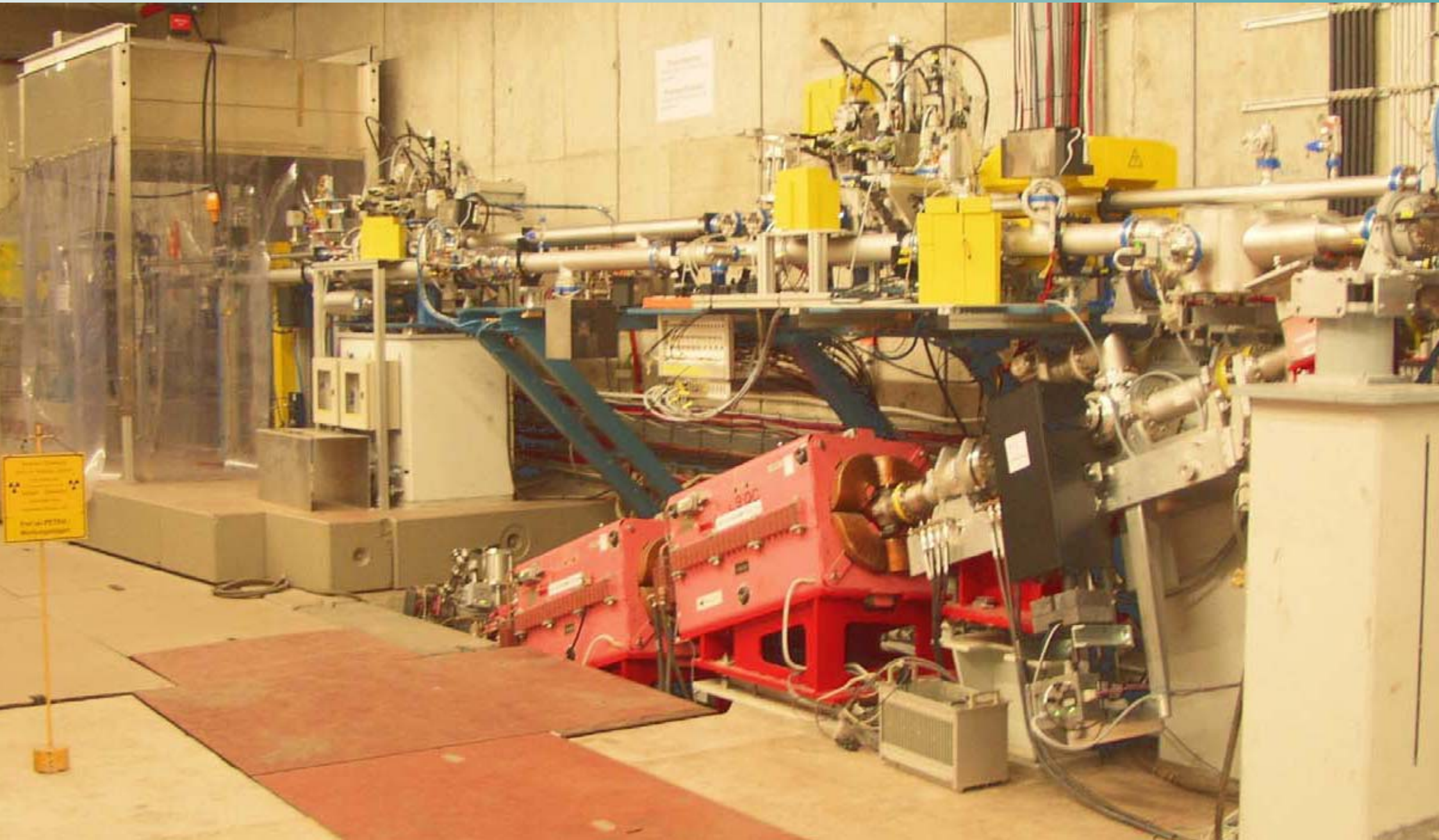
placed scanners do not have dedicated

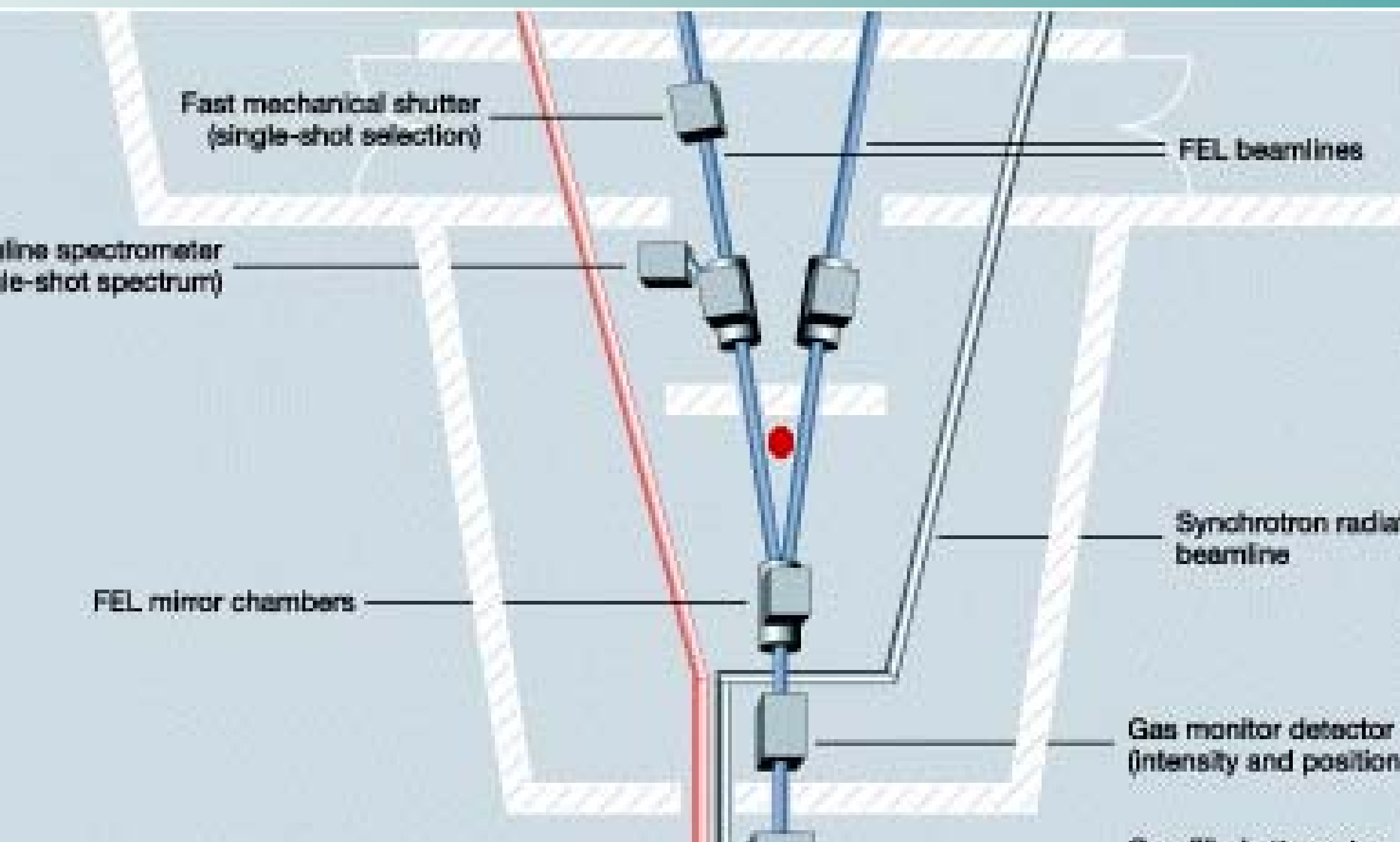


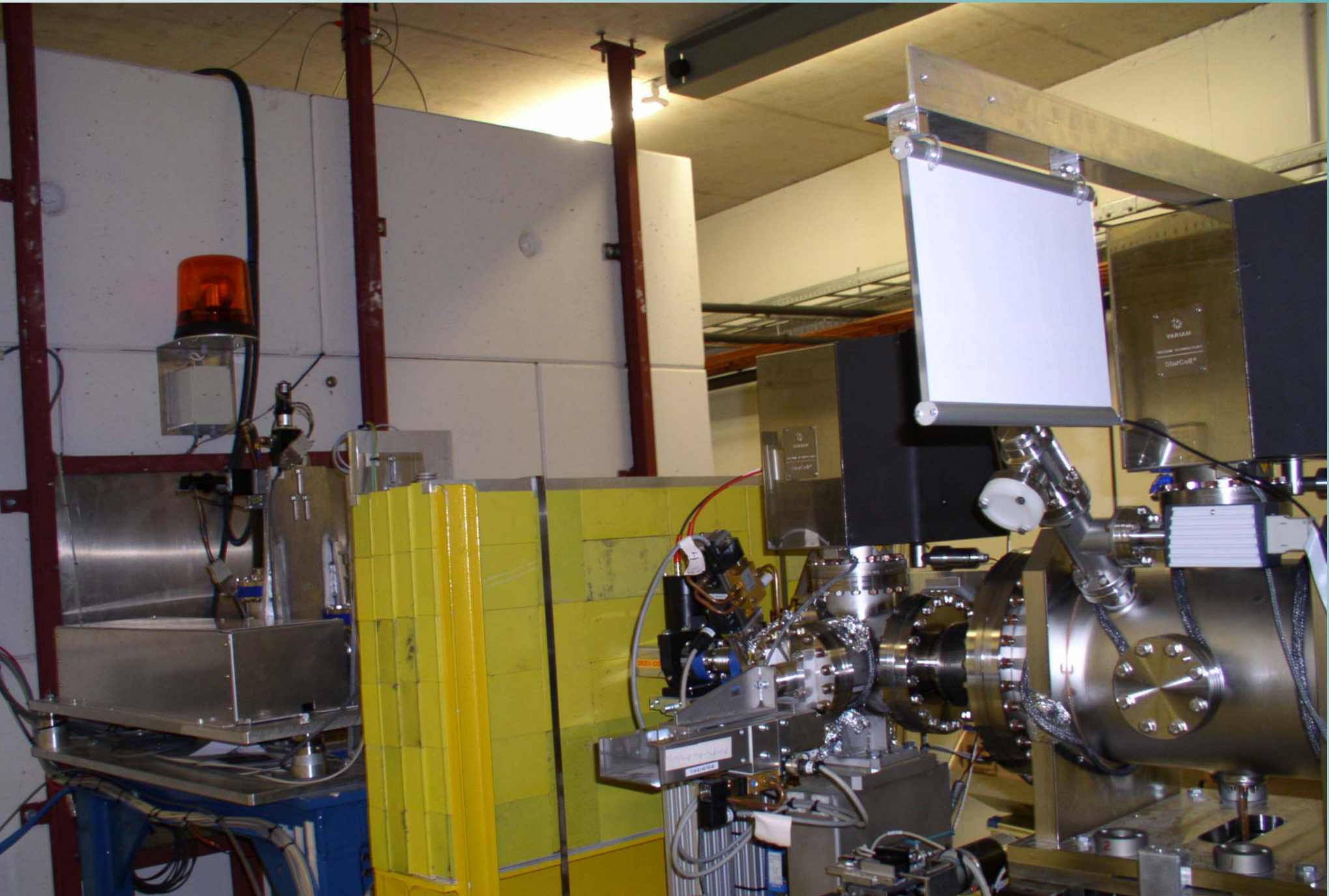
simulations/tracking to find optimal position for dedicated
 detector \rightarrow 1 detector per scanner.


what about γ -s?

← 0 MeV 100 MeV 500 MeV 1.2 GeV 315 m









prototype γ detector (D3, thanks to Albrecht Leuschner)
1.5X0 Pb absorber/converter is able to see all the upstream
- 3-fold signal increase during the scan.

size/synchronize the signal to derive the beam size.
optimize signal/noise by changing thickness of the
converter/scintillator.

while:

relocate/track charged secondaries from the wires to
the dedicated detector positions (also for FLASH2,